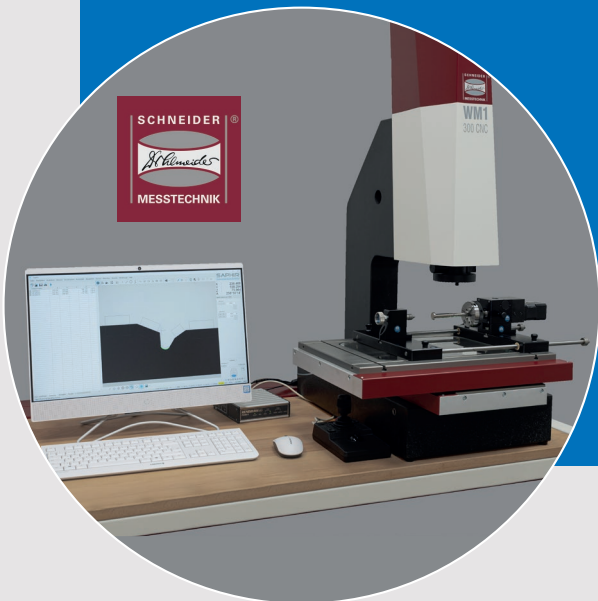


*Fixturing systems*

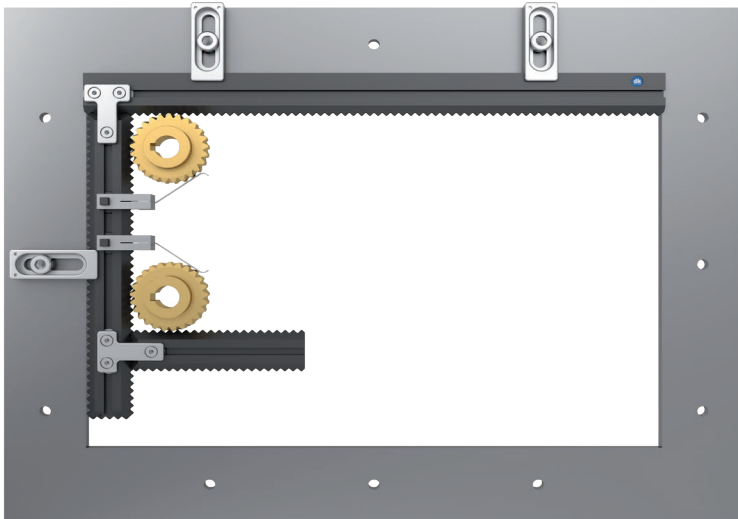
*Clamping fixture sets for  
Schneider WM1 series*



## SCHIENENFIX – the fixating system for multi-sensorial metrology equipment

Versatile modular system for optical measuring machines, multi-sensorial devices, measuring projectors and measuring microscopes. The basis is a modular toothed rail system that accommodates the clamping elements directly or via a quick-change pallet system. Optionally available fixed or adjustable structural elements can be mounted in between to spatially position the test specimens optimally. The fine-toothed precision rails make objects with straight edges very easy to measure in transmitted light. The interchangeable pallets enable set-ups outside the measuring machine and zero point placement on the measuring device for a simple and rapid measuring process, especially advantageous for measuring adjacent to production.

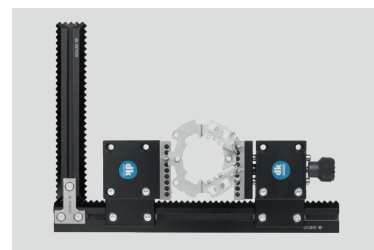
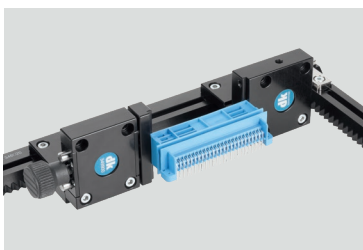
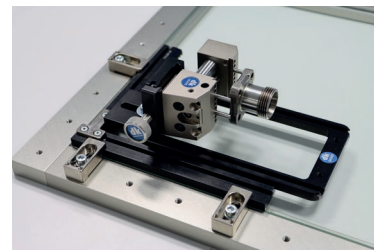
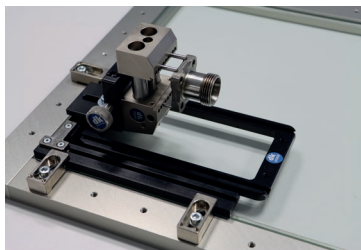
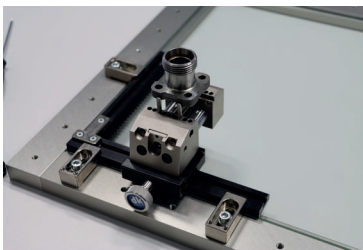
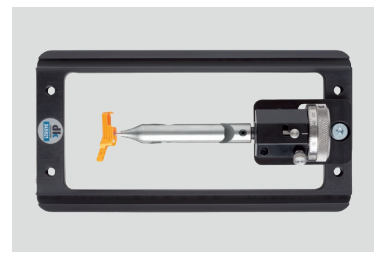
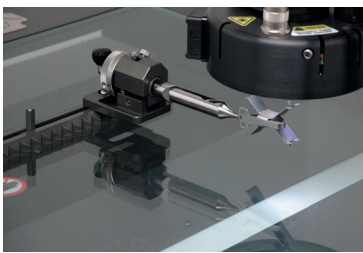
### Basic rail set



Order numbers for diverse measuring window sizes:

Measuring window	Order No.
200 x 100 mm	269973_200/100
300 x 200 mm	269973_300/200
400 x 200 mm	269973_400/200
400 x 300 mm	269973_400/300
500 x 200 mm	269973_500/200

### Application examples



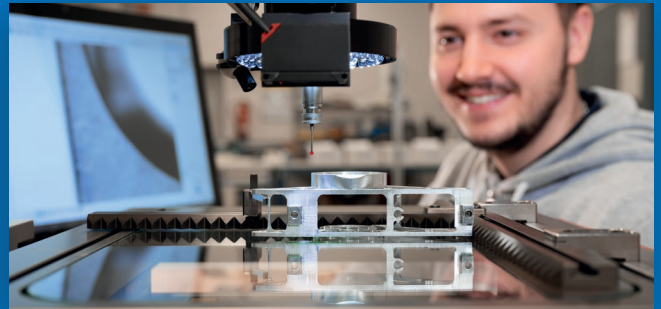
Clamping sets for milled, bent, punched and injection moulded parts

## Clamping fixture sets for the Schneider measuring technology WM1 series

A basic rail configuration adapted to the respective equipment size and four universal fixating element sets form the basis for perfect alignment and fixation of many different parts.

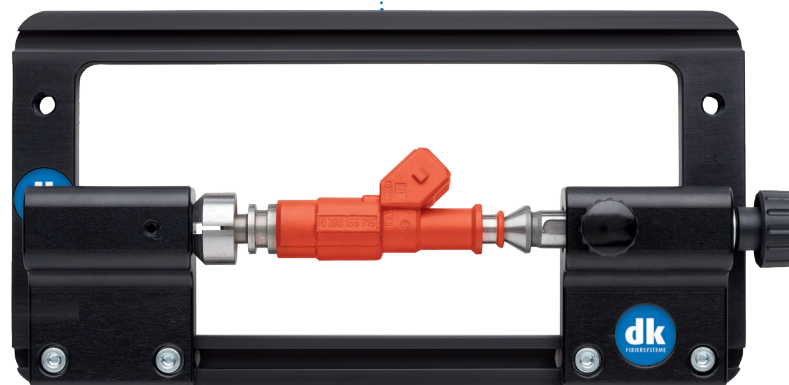
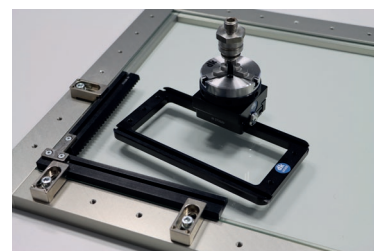
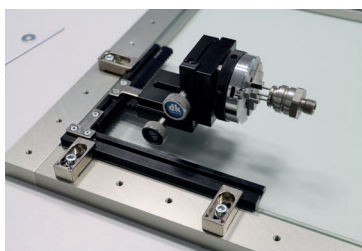
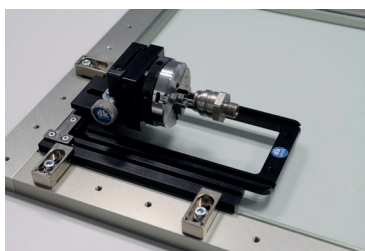
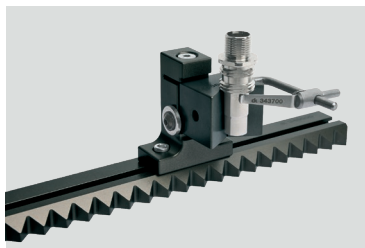
The WM series fulfils various measuring tasks just as flexibly as the modular clamping system from dk solves the associated fixating requirements.

The measuring device is suitable for measuring turned, milled, injection-moulded, punched and bent parts, and the basic equipment sets are also designed for this purpose. Measuring close to production is supported by dk with the quick-change pallet: set-ups outside the metrology machine serve to achieve maximum performance as a result of minimising unproductive machine downtimes as well as simplifying the overall process.



For special part geometries, many proven fixation elements that are 100% compatible with these basic sets can be found in the dk main catalogue with over 1,000 items. This means that the basic sets can be expanded indefinitely and adapted to any future requirements in terms of products and processes. Multi-clamping set-ups and special designs can also be realised without any problems.

### Application examples



Clamping sets for turned parts

## Basic rail sets for the WM1 series

### Description

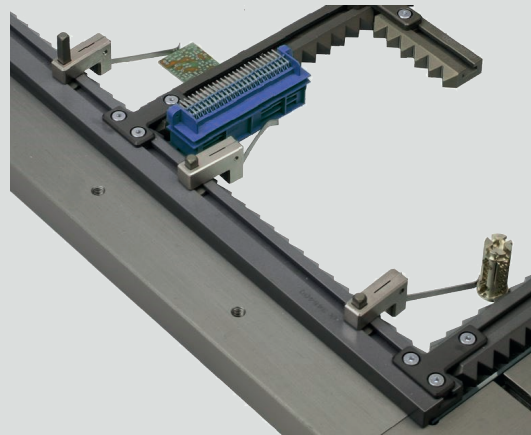
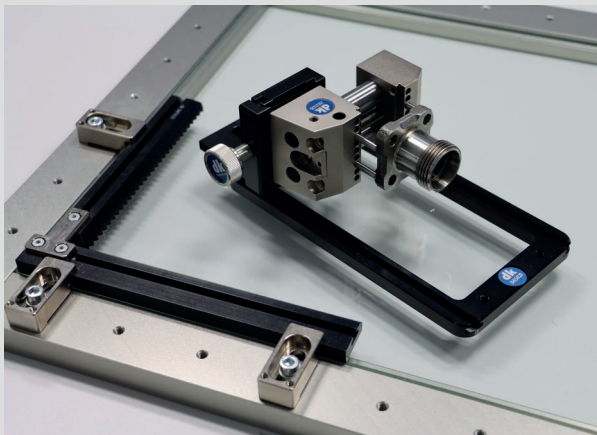
Clamping set for optical measuring tasks. For the construction of a simple mounting frame that can be fastened to the slots / tapped holes of the measuring table with clamping claws. Including 2 spring fingers to quickly and easily hold the test piece in position.



### Set variants

Order No.	Description	Measuring window
269973_200/100	WM1 200 CNC	200 x 100
269973_300/200	WM1 300 CNC	300 x 200
269973_400/200	WM1 400 CNC	400 x 200
269973_400/300	WM1 400x300 CNC	400 x 300
269973_500/200	WM1 500 CNC	500 x 200

### Application examples





## Basic rail sets for the WM1 series

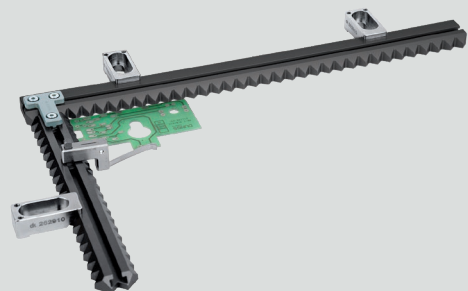
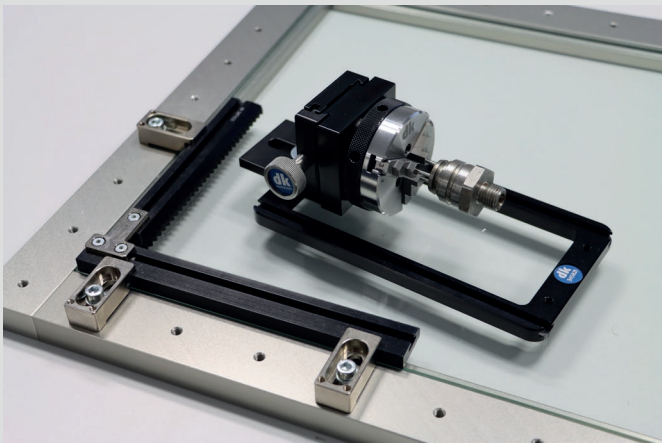
### Set contents - Toothed rail with fine tothing

Order No.	Description	WM1 200	WM1 300	WM1 400
345020	Base rail 250 mm / T 5	1	-	-
345220	Base rail 350 mm / T 5	-	1	-
345420	Base rail 450 mm / T 5	-	-	1
347220	Connecting rail 100 mm / T 5	1	1	1
346020	Connecting rail 200 mm / T 5	-	1	1
348000	Rail couplers	1	2	2
262925	Clamping claws 45 mm M 5	3	3	3
349100	Spring finger, left 34 mm	1	1	1
349200	Spring finger, right 34 mm	1	1	1
268500	Adapter for spring finger 20 mm	2	2	2
K50806M5	Slot key M5	3	3	3

### Set contents - Toothed rail with fine tothing

Order No.	Description	WM1 400x300	WM1 500
345420	Base rail 450 mm / T 5	1	-
345620	Base rail 500 mm / T 5	-	1
347220	Connecting rail 100 mm / T 5	1	1
346020	Connecting rail 200 mm / T 5	-	1
346220	Connecting rail 250 mm / T 5	1	-
348000	Rail couplers	2	2
262925	Clamping claws 45 mm M 5	3	3
349100	Spring finger, left 34 mm	1	1
349200	Spring finger, right 34 mm	1	1
268500	Adapter for spring finger 20 mm	2	2
K50806M5	Slot key M5	3	3

### Application examples



# Expansion clamping set for turned parts

Order No: 269973-SD01

## 1 Quick-change pallet with 200 x 72 mm window

Description	Quantity	Order No.
Basic pallet 305x100x10 mm with T-slot and M6 hole to accommodate various clamping elements. The pallet together with the mounted clamping elements can be positioned and fixated on the toothed rail	1	345801



## 2 Tailstock pair for T-slot in toothed rail and pallet

Description	Quantity	Order No.
Infinite mounting with any spacing, with one fixed and one movable adapter, incl. $\varnothing$ 12 / 60 mm centres which can be exchanged for other sizes and types	1	349600



## 3 90° female centre

Description	Quantity	Order No.
Workpiece size: 2 - 15 mm; gap width: 1 mm For mounting in a tailstock	2	349720



## 4 120° V-block with spring finger

Description	Quantity	Order No.
120° V-block with spring finger for fixating rotationally symmetrical parts via spring force; for vertical and horizontal positioning of test pieces	1	267900
Matching V-block bracket	1	267910



# Expansion clamping set chuck

Order No: 269973-SD02

## 1 SWA39 quick-action clamp for T-slot in toothed rail and pallet

Description	Quantity	Order No.
Quick-change fixture for infinite attachment in the T-slot of toothed rail and pallet; alignment via centring pins; to accommodate all fixation elements of the SWA39 system	1	273320



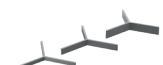
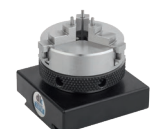
## 2 SWA39 quick-action 90° clamping element

Description	Quantity	Order No.
Quick-action 90° clamping element for adaptation to the SWA39 quick-action clamping element; for positioning the SWA39 system fixating elements in horizontal alignment	1	283300



## 3 SWA39 precision 50 mm three-jaw chuck

Description	Quantity	Order No.
Manually operated three-jaw chuck with jaws that can be reversed without tools for internal and external clamping of rotationally symmetrical workpieces; with pin holes and pins for elevated fixation of parts to make them accessible from all sides.	1	329705
Depth-stop support for chuck	1	283250



## Expansion clamping set vice jaws

Order No: 269973-SF01

### 1 Quick-change pallet with 200 x 72 mm window

Description	Quantity	Order No.
Basic pallet 305x100x10 mm with T-slot and M6 hole to accommodate various clamping elements. The pallet together with the mounted clamping elements can be positioned and fixated on the toothed rail	1	345801



### 2 Precision 50 mm vice jaws

Description	Quantity	Order No.
Infinite mounting with any spacing, with one fixed and one movable jaw, incl. 3 springs of various strengths	1	349900



### 3 Prism jaw plates

Description	Quantity	Order No.
1 set with 1 smooth and 1 prism jaw; recommended from Ø 2 mm	1	282700



### 4 Stop for vice

Description	Quantity	Order No.
Adjustment range 50 mm	1	318250



## Expansion clamping set for milled, injection moulded, punched and bent parts

Order No: 269973-SF02

### 1 Quick-change pallet with 200 x 72 mm window

Description	Quantity	Order No.
<i>For description see clamping set for turned parts</i>	1	345801



### 2 SWA39 quick-action clamp for T-slot in toothed rail and pallet

Description	Quantity	Order No.
For infinite positioning in the T-slot of toothed rail and pallet	1	273320



### 3 SWA39 quick-action 90° clamping element

Description	Quantity	Order No.
For mounting on the SWA39 quick-action clamp	1	283300



### 4 Precision 50 mm vice

Description	Quantity	Order No.
With SWA39 interface; incl. adjustable stop, clamping width extension from 35 to 75 mm and pins for elevated part positioning	1	282100



### 5 Rotary swivel mount with fine adjustment and incrementation

Description	Quantity	Order No.
Infinite rotation with optional 30° incrementation, adapter for all clamping elements with SWA5 such as small-part holders and small chucks	1	314900



### 6 Small parts clamp, offset

Description	Quantity	Order No.
For holding tiny parts via spring force; SWA5 adapter	1	266100





The digital version of the catalog can be found under:  
[www.dk-fixiersysteme.de](http://www.dk-fixiersysteme.de)



#### Available from

Dr. Heinrich Schneider  
 Messtechnik GmbH  
 Rotlay Mühle  
 55545 Bad Kreuznach  
 Germany



Tel. +49 (0) 671 291 02  
[www.dr-schneider.de](http://www.dr-schneider.de)  
[info@dr-schneider.de](mailto:info@dr-schneider.de)



dk FIXIERSYSTEME GmbH & Co. KG  
 Ferdinand-Lassalle-Straße 35  
 D-72770 Reutlingen, Germany

Tel. +49 (0) 7121 90 97 10  
 Fax +49 (0) 7121 90 97 120  
[info@dk-fixiersysteme.de](mailto:info@dk-fixiersysteme.de)  
[www.dk-fixiersysteme.de](http://www.dk-fixiersysteme.de)

*modular. simple. better.*

# The entire world of fixating, clamping and positioning

The around 1,000 part comprehensive standard construction sets of the dk fixating systems for measuring technology offer the following advantages:

- » Modular system that has grown and proven itself over decades
- » Modularity across different programmes
- » Solutions for every positioning task
- » Economic efficiency through the synergy effects of several sector solutions

SWA39



SPANNFIX PRO



SPANNFIX ECO



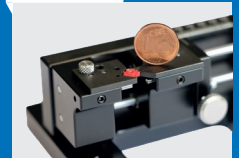
QUADERFIX



SCHIENENFIX



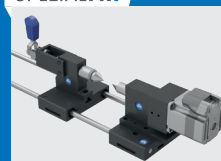
MICROFIX



SWA39CT



SPEZIALFIX



ARTICULAR JOINT SYSTEMS



SWA39SURF



**FAST  
 REASSEMBLY  
 LIFELONG**

The basic principle of all dk fixating systems!

Our fixtures are modular in design, can be dismantled at any time and can be identically reassembled again. The compatibility of the dk fixation systems makes the utility value perfect.