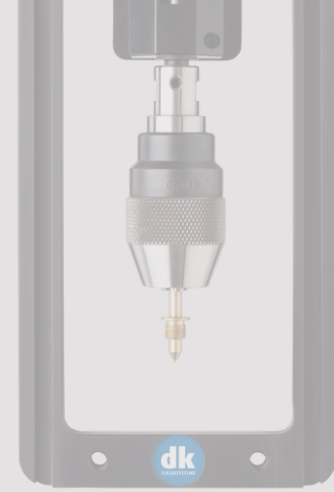
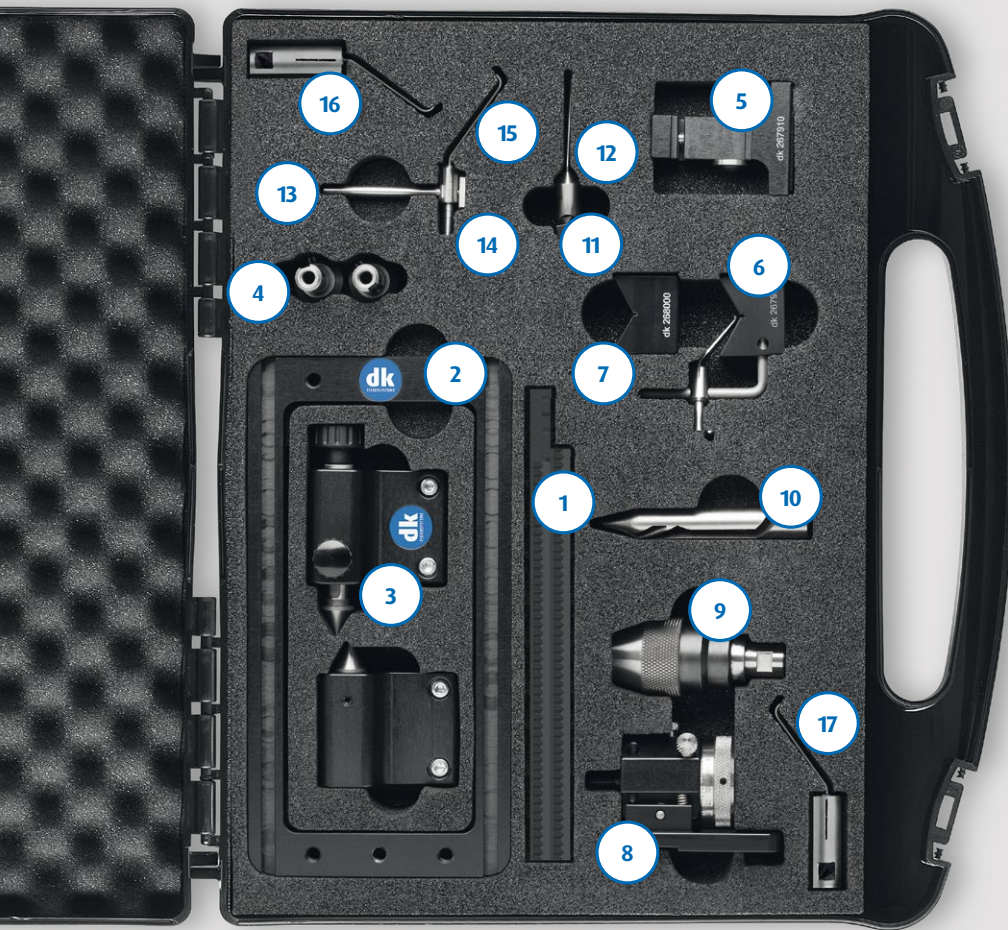


Fixturing systems

***Basic sets for
KEYENCE-Systems
IM, LM, LM-X, VHX, XM***





Starter sets suitable for KEYENCE IM, LM, LM-X, VHX, XM

Digital measuring projector

Machine type Description	Measuring window Table size	Tooth angle dk Article number	Fixation set dk Article number	Quantity Single parts	Page number in leaflet
IM 6225	100 x 200 mm	no angle	269990	18	3 - 5
IM 7010	200 x 200 mm	269002	269991	19	3 - 5
IM 7020	200 x 200 mm	269002	269991	19	3 - 5
IM 7030	300 x 200 mm	269003	269993	19	3 - 5
IM 8005	Ø 100 mm	no angle	269990	18	3 - 5
IM 8020	200 x 200 mm	269002	269991	19	3 - 5
IM 8030	300 x 200 mm	269003	269993	19	3 - 5

Optical coordinate metrology system

LM 1000	225 x 125 mm	no angle	269990	18	3 - 5
LM 1100	225 x 125 mm	no angle	269990	18	3 - 5

Multi-sensor metrology machine

LM-X 100L	325 x 175 mm	269003	269993	19	3 - 5
LM-X 100T	325 x 175 mm	269003	269993	19	3 - 5
LM-X 100TL	325 x 175 mm	269003	269993	19	3 - 5

Digital microscope

VHX 7000N		no angle	269990	18	3 - 5
VHX 970FN		no angle	269990	18	3 - 5

3D production metrology system

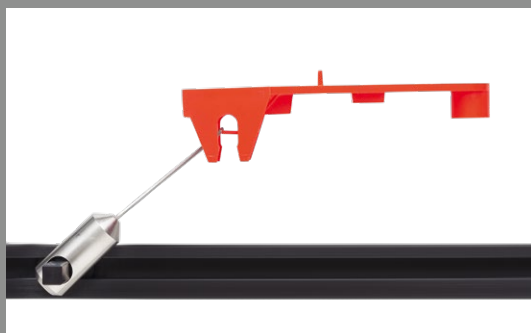
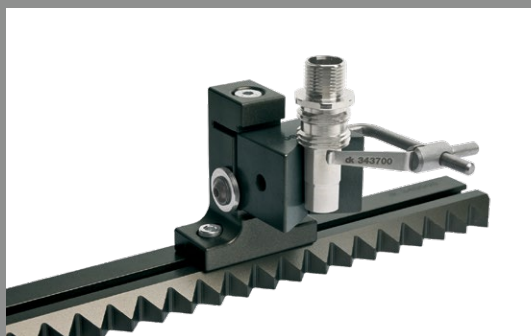
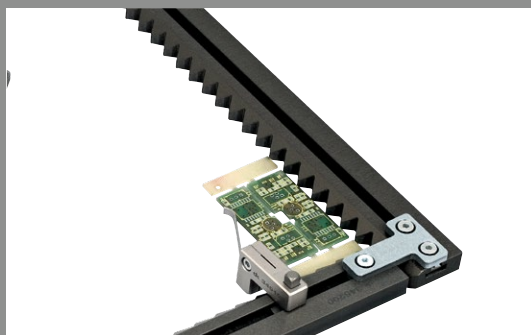
XM 5000	450 x 300 mm	no angle	269992	27	6 - 7
XM 5000A	250 x 250 mm	no angle	269992	27	6 - 7
XM H5000	450 x 300 mm	no angle	269992	27	6 - 7
XM H5000A	250 x 250 mm	no angle	269992	27	6 - 7



Basic sets for fixating systems for KEYENCE systems series IM, LM, LM-X and VHX

Set with basic stop angle and essential clamping elements for flexibly and securely holding workpieces during optical measuring operations. Whether with turned, milled, stamped or cast, round, cubic, flat, complex or free-form workpieces - these dk clamping elements guarantee simple and quick positioning and holding for effective and economical use of the measuring equipment.

The plate frames included in the set enable setups away from the metrology equipment which increases the OEE. Straight edges can be layed against the base angle with 5 mm serrations without affecting the optical measurability. This fixed stop also enables very light parts to be held that may move during lateral probing which would negatively effect the measuring results.



Content of sets for systems IM, LM, LM-X und VHX

1

Basic stop angle not included with set 269990

Description	Quantity	Order number
Toothed rail of set 269991 with T-slot and fastening; Suitable for IM 7010, IM 7020, IM 8020	1	269002
Toothed rail of set 269993 with T-slot and fastening; Suitable for IM 7030, IM 8030, LM-X100L, LM-X 100T, LM-X 100TL	1	269003



2

Pallet

Description	Quantity	Order number
Size: 195 x 100 mm. Window: 160 x 72 mm; with T-slot and M6 fastening thread	1	345821



3

Pair of tailstocks incl. centres

Description	Quantity	Order number
Centres Ø 12 mm/60°, with slot nuts	1	349600



4

Internal centre 90°

Description	Quantity	Order number
Clamping range 2-15 mm. Gap width 1 mm; for mounting in tailstock	2	349720



5

Prism support 90°

Description	Quantity	Order number
For horizontal and vertical mounting of prisms, with slot nuts	1	267910



6

Prism 120° with spring finger

Description	Quantity	Order number
Clamping range 2-25 mm; mounting on prism support or SWA5 connection	1	267900



7

V-block 120° with magnetic fixation

Description	Quantity	Order number
Clamping range 2-25 mm; mounting on prism support or SWA5 connection	1	268000



8

Rotary/pivot holder

Description	Quantity	Order number
Centre height: 23 mm, with SWA5 connection	1	314900



9

Precision mini chuck

Description	Quantity	Order number
Internal holding: 0-5 mm External holding: 5-9 mm, with SWA5 connection	1	283800



Content of sets for systems IM, LM, LM-X und VHX

10 Small parts clamp, offset

Description	Quantity	Order number
Clamping width: 0-1.6 mm; Clamping breadth: 1.5 mm, with SWA5 connection	1	265700



11 Holder for spring finger in set 269990 only 1 piece included

Description	Quantity	Order number
Length: 30 mm, mounting in T-slot	2	268600



12 Spring finger round, 34 mm

Description	Quantity	Order number
For vertical clamping, mounting in holder for spring finger	1	269100



13 Column Ø 4mm for spring finger

Description	Quantity	Order number
With M4 thread, length: 50 mm, mounting in slot key or directly on measuring table	1	269043



14 Slot key M4

Description	Quantity	Order number
For column with Ø 4 mm	1	347700



15 Spring finger round, 40 mm

Description	Quantity	Order number
For vertical clamping, assembly on column with Ø 4 mm for spring finger	1	269038



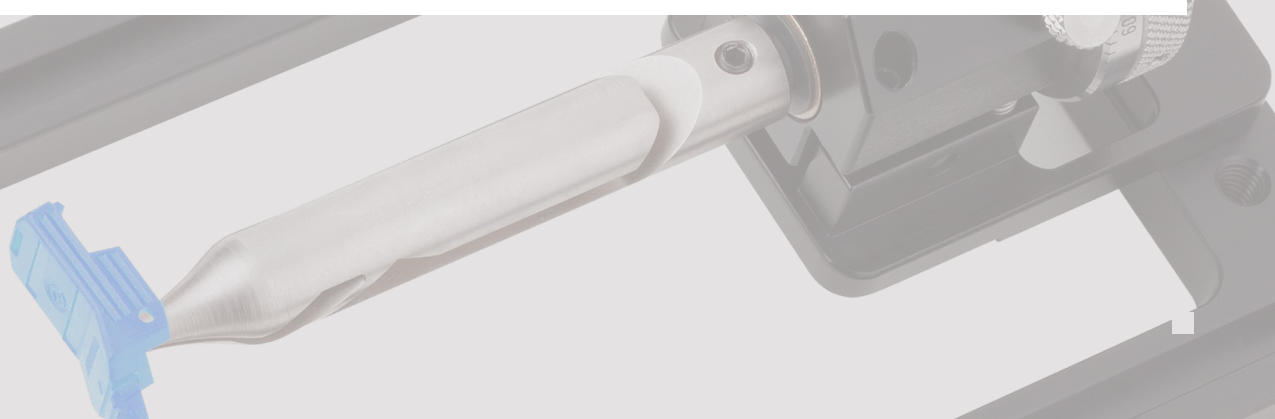
16 Spring finger horizontal, 34 mm, left not included with set 269990

Description	Quantity	Order number
Holder for spring finger, clamping direction left	1	349100



17 Spring finger horizontal, 34 mm, right not included with set 269990

Description	Quantity	Order number
Holder for spring finger, clamping direction right	1	349200



Basic set for fixating system for KEYENCE system XM

Order number 269992

Column with Ø 12 mm and M8 thread

Description	Quantity	Order number
Length 50 mm	2	368620
Length 100 mm	2	368720
Length 200 mm	2	368920

Spring finger for columns 12 mm, flat

Description	Quantity	Order number
Length 75 mm	3	302300
Length 95 mm	3	302400

Quick-action clamps

Description	Quantity	Order number
Quick-action clamp with M8 fastening screw	1	285208

50 mm precision vice

Description	Quantity	Order number
Clamping with 35 mm incl. expansion to increase clamping width up to 75 mm, adjustable stop, set of 4 regular pins for increased clamping	1	282100

Set of dowel pins

Description	Quantity	Order number
Set of special dowel pins with straight offset contact face for specifically increased clamping	1	282300



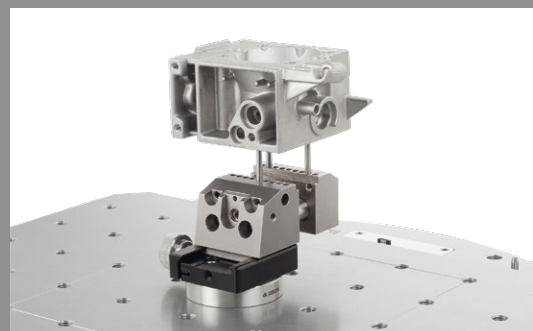
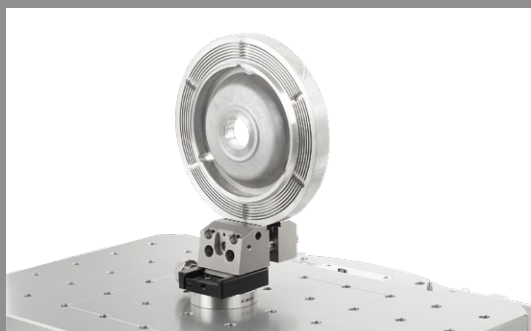
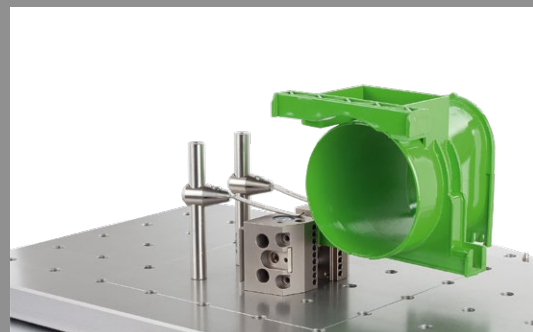
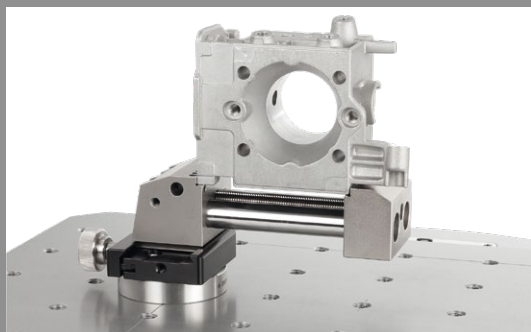
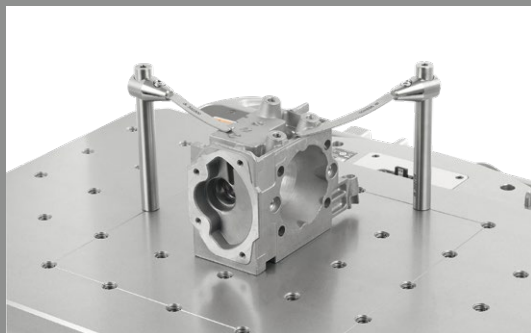
Basic sets for fixating systems for KEYENCE system series XM

Universal use thanks to an innovative combination of fastening elements.

Three pairs of columns of the common heights and six spring fingers in two common lengths reliably enable the secure fixating of test specimens for the tactile process of KEYENCE XM metrology technology.

Additionally a quick-action clamp, also matched to M8 tapped holes of the adjustable XM measuring table. The precision vice is mounted via the SWA39 interface in a matter of seconds. In addition to two sets of pins, the set includes clamping width extension as well as an adjustable stop.

This precision vice, specifically developed by dk FIXIERSYSTEME for metrology, offers maximum functionality in the most compact design and, in addition to conventional clamping, the option of clamping parts in a raised position using special cylindrical pins. As a result, this measuring fixture ensures probe accessibility from all sides, which allows measurement in a single clamping operation. Both external and internal clamping is possible thanks to the increased part clamping!





TACTILE MEASURING



OPTICAL MEASURING



MACHINE VISION & SENSOR



CONTOUR & SURFACE MEASUREMENT



COMPUTED TOMOGRAPHY



3D LASER SCANNING



dk FIXIERSYSTEME GmbH & Co. KG

Untere Breite 7
D-72144 Dußlingen

Tel. +49 (0) 7072 60042-0
info@dk-fixiersysteme.de
www.dk-fixiersysteme.de

modular. simple. better.

The entire world of fixating, clamping and positioning

The comprehensive standard construction sets with around 1,000 parts by dk FIXIERSYSTEME for metrology technology offer the following advantages:

- » Modular system that has grown and been tried and tested for decades
- » Modularity across different lines
- » Solutions for every positioning task
- » Efficiency through synergetic effects through several industry solutions

SWA39



SPANNFIX PRO



SPANNFIX ECO



QUADERFIX



SCHIENENFIX



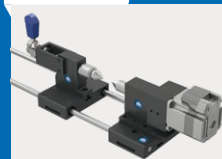
MICROFIX



SWA39CT



SPEZIALFIX



SWA39SURF



ARTICULATED SYSTEMS



MACHINE VISION



FAST
REASSEMBLY
LIFELONG

The basic principle of all dk FIXIERSYSTEME!

Our fixtures have a modular design, may be dismantled at any time and reassembled to their initial state. The compatibility of dk FIXIERSYSTEME ensures perfect utility value.