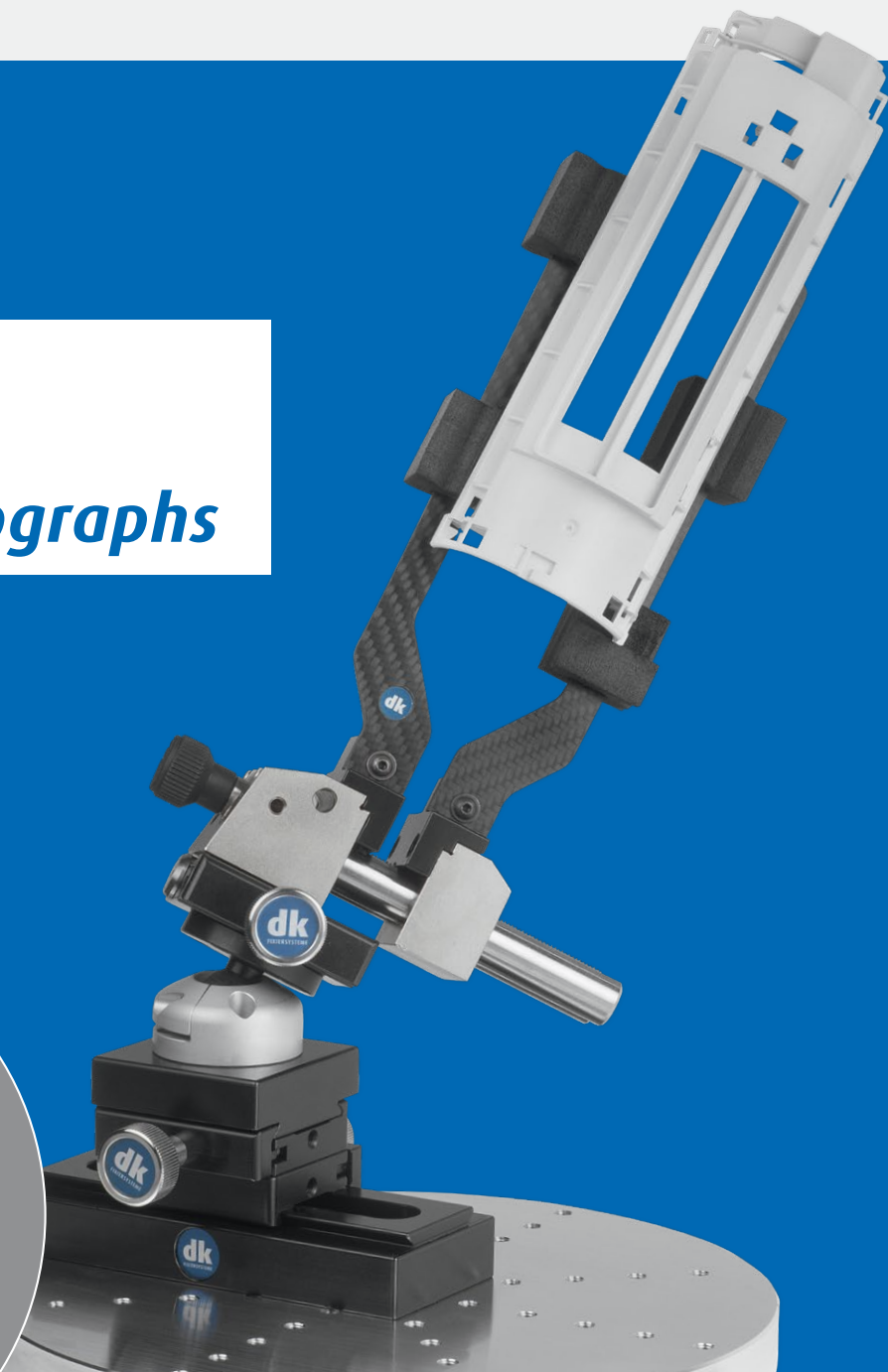


*Fixating systems*

*Basic set for  
WENZEL exaCT  
computer tomographs*



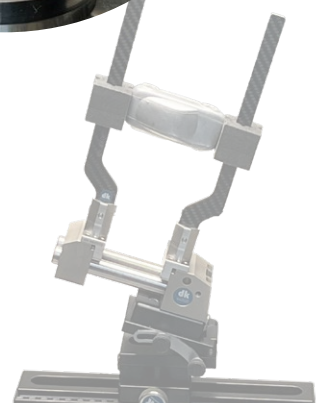
## Basic sets for WENZEL computer tomographs

Two basic sets are the foundation for perfect alignment and fixation of many different items. The modular XRAY clamping system from dk solves the corresponding fixation requirements as flexibly as the WENZEL computer tomographs fulfill various measurement tasks. WENZEL CT devices are ideal for measuring turned, milled, injection molded, stamped and bend-formed parts, and the basic sets of the dk fixation systems are also designed around this.

Production-related measuring is facilitated by dk with the quick-change adapter SWA39: setting up outside of the CT serves to achieve maximum performance by minimizing unproductive machine times and simplifying the overall process. In addition, many proven fixating elements for more specialised part geometries, which are 100% compatible with these basic sets, can be found in the dk CT main catalogue.



### Application examples



# Maximum modularity for optimum flexibility

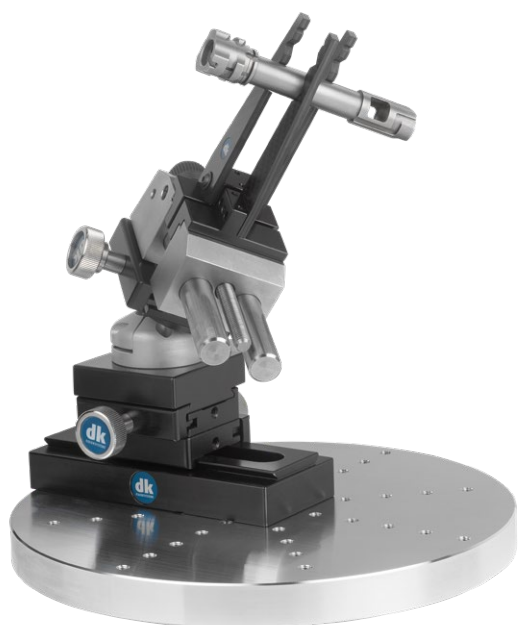
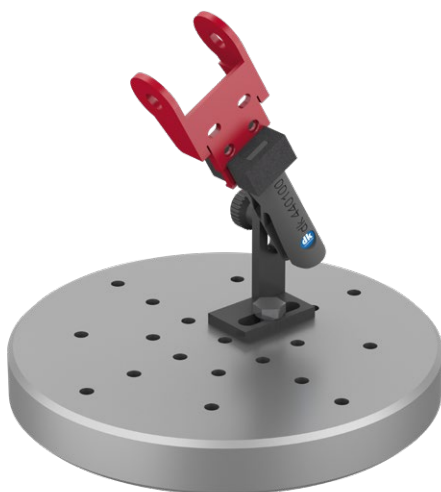


## ***XRAY - the fixating system for computed tomography***

The standard program SWA-39 with more than 200 products is the basis for the CT fixating system from dk. These modules also form the most advanced construction sets for clamping fixtures in industrial computed tomography, for securely holding any type of component.

The X-ray transparent connection to the test object is realised with workpiece holders that create the conditions for a CT scan in terms of geometry and material by clearly and simply isolating the object to be examined from the fixation system.

### **Application examples**



Order number	Set designation
440300	CT basic set Piko clamp XRAY 4
440311	CT basic set PS 50 / BF 100

## CT Basic set Piko clamp XRAY4

dk order number: 440300

## WENZEL Fixture Kit CT-S

WENZEL order number: 640.00062

### 1 3D stand holder for Piko clamp without SWA39

Description	Order number
3D stand holder with rotation and movement via M6 fastening slotted hole	440105



### 2 Piko clamp XRAY4 for XRS without SWA39

Spring-loaded small parts clamp incl. CT moulded foam attachment Clamping width 0 - 7.5 mm	440100
--	--------



### 3 XRS systems foam attachment

1 pair XRS foam attachments	440120
-----------------------------	--------



### 4 Mounting plate 30 mm

Additional joint	353750
------------------	--------



### Application examples



<b>1</b>	<b>SWA39 250 mm base rail with slot and SWA39 profile</b>		
	<b>Description</b>	<b>Order number</b>	
	Can be mounted on CT turntable using supplied M6, M8 or M10 screws	440000	
<b>2</b>	<b>SWA39 Quick-change sliding adapter</b>		
	For mounting SWA39 attachments and enabling infinite adjustment along the base rail	440010	
<b>3</b>	<b>SWA39 quick-action clamp with rotary and pivot unit</b>		
	Infinitely variable +90° / -55° tilt and 360° rotation	314020	
<b>4</b>	<b>Precision vice 50mm</b>		
	Effective clamping width dependent on the clamping elements used i.e. elements for clamping round intermediate elements or elements for clamping flat intermediate elements via system adapters	440030	
<b>5</b>	<b>System adapter for flat intermediate clamping elements XRAY1</b>		
	<b>Description</b>	<b>Order number</b>	
	For mounting flat intermediate clamping elements. Set with 4 adjustable holders	440036	
<b>6</b>	<b>100 mm precision three-jaw chuck</b>		
	Effective clamping width dependent on the clamping elements used i.e. elements for clamping round intermediate elements or elements for clamping flat intermediate elements via system adapters	440015	
<b>7</b>	<b>Flat intermediate clamping element straight 200 20 S XRAY 1</b>		
	Attachment via system adapter to XRAY precision vice 50 mm or to XRAY chuck. Overhang 20mm; the set contains 4 of these flat clamping elements each	440075	
<b>8</b>	<b>Flat intermediate clamping element straight 200 40 S XRAY 1</b>		
	Attachment to XRAY precision vice 50 mm via system adapter or to XRAY chuck. External projection 40mm	440080	
	The set contains 4 of these flat intermediate clamping elements		
<b>9</b>	<b>Flat intermediate clamping element V-block with 3 prisms 100 XRAY 1</b>		
	Attachment to XRAY precision vice 50 mm via system adapter or to XRAY chuck. Overhang 40mm;	440050	
	The set contains 3 of these flat clamping elements each		
<b>10</b>	<b>XRS V-block 303030 CT moulded foam</b>		
	Easy to slide onto intermediate flat clamping elements;	440115	
	The set contains 8 pieces of XRS moulded foam		

**Further clamping elements and accessories for computed tomography can be found at [www.dk-fixiersysteme.de](http://www.dk-fixiersysteme.de) or from your WENZEL dealer**



The digital catalogue version  
can be found at:  
[www.dk-fixiersysteme.de](http://www.dk-fixiersysteme.de)

Available from

**WENZEL®**

WENZEL Group GmbH & Co KG  
Werner-Wenzel-Straße  
97859 Wiesthal

Tel. +49 (0) 6020 201-0  
[info@wenzel-group.com](mailto:info@wenzel-group.com)  
[www.wenzel-group.com](http://www.wenzel-group.com)



**dk FIXIERSYSTEME GmbH & Co. KG**  
Untere Breite 7  
D-72144 Dußlingen

Tel. +49 (0) 7072 60042-0  
[info@dk-fixiersysteme.de](mailto:info@dk-fixiersysteme.de)  
[www.dk-fixiersysteme.de](http://www.dk-fixiersysteme.de)

*modular. simple. better.*

# The entire world of fixating, clamping and positioning

The comprehensive standard construction sets  
with around 1,000 parts by dk FIXIERSYSTEME for  
metrology technology offer the following advantages:

- » Modular system that has grown and proven itself over decades
- » Modularity across different programmes
- » Solutions for every positioning task
- » Economic efficiency through the synergy effects of several sector solutions

**SWA39**



**SPANNFIX PRO**



**SPANNFIX ECO**



**QUADERFIX**



**SCHIENENFIX**



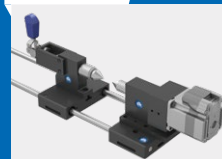
**MICROFIX**



**SWA39CT**



**SPEZIALFIX**



**SWA39SURF**



**ARTICULATED SYSTEMS**



**MACHINE VISION**



**FAST  
REASSEMBLY  
LIFELONG**

The basic principle of all dk FIXIERSYSTEME!

Our fixtures have a modular design, may be dismantled at any time  
and reassembled to their initial state. The compatibility of dk FIXIER-  
SYSTEME ensures perfect utility value.